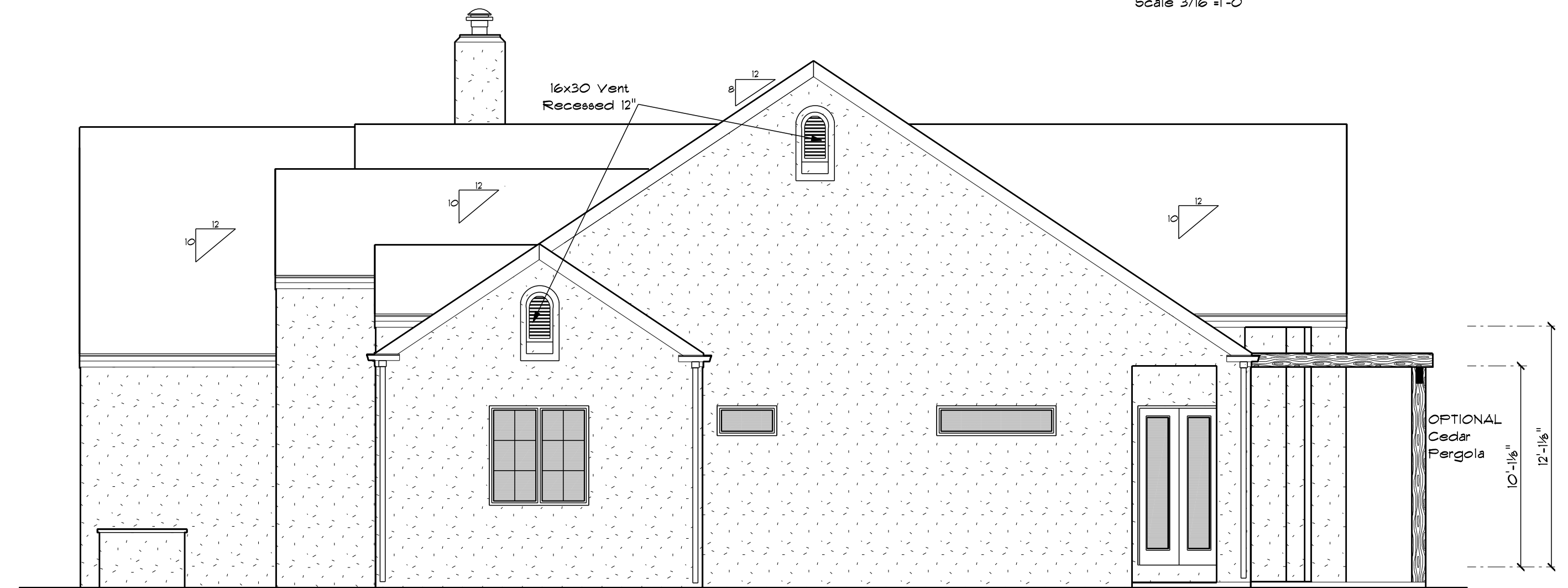


**LEFT ELEVATION**  
Scale 3/16"=1'-0"



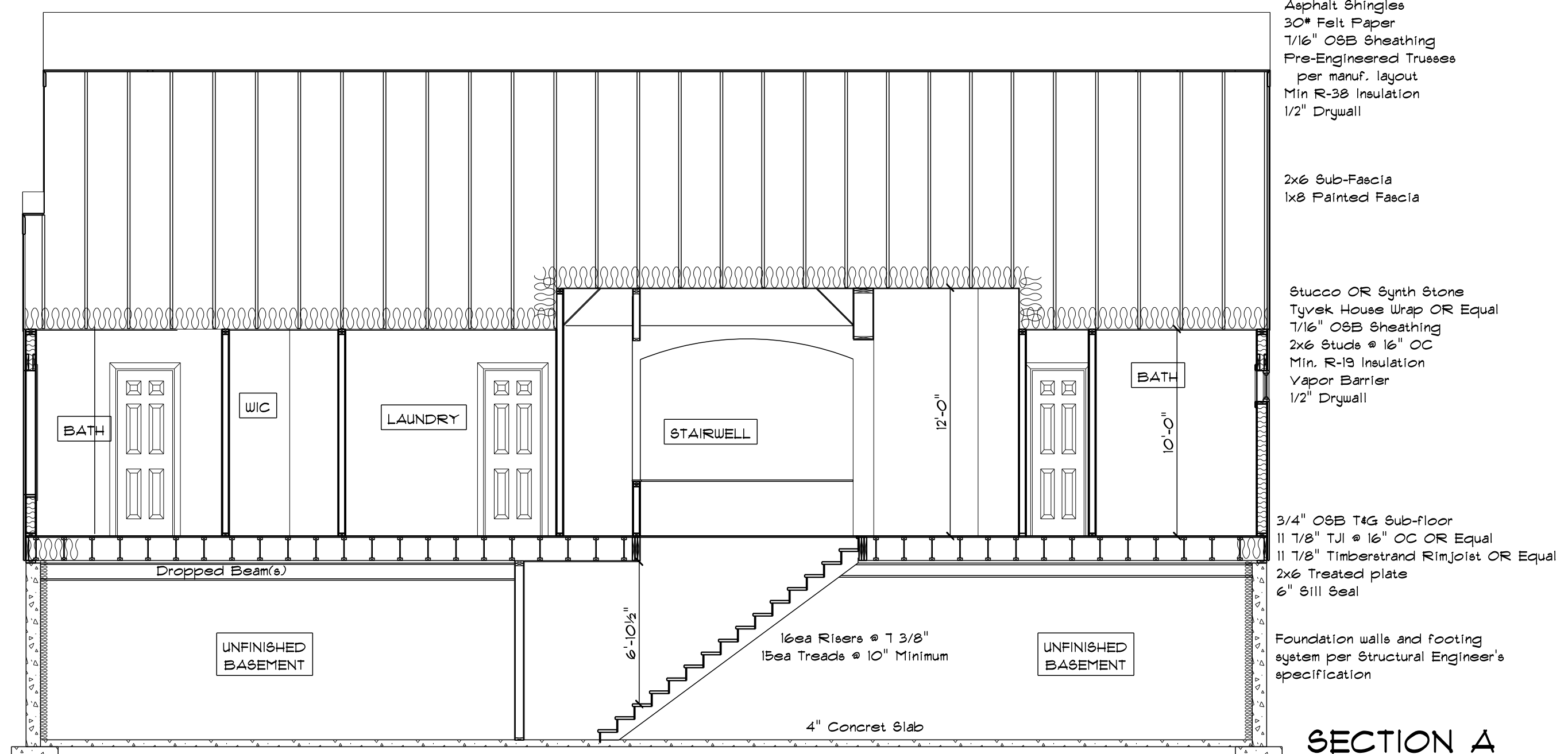
**RIGHT ELEVATION**  
Scale 3/16"=1'-0"



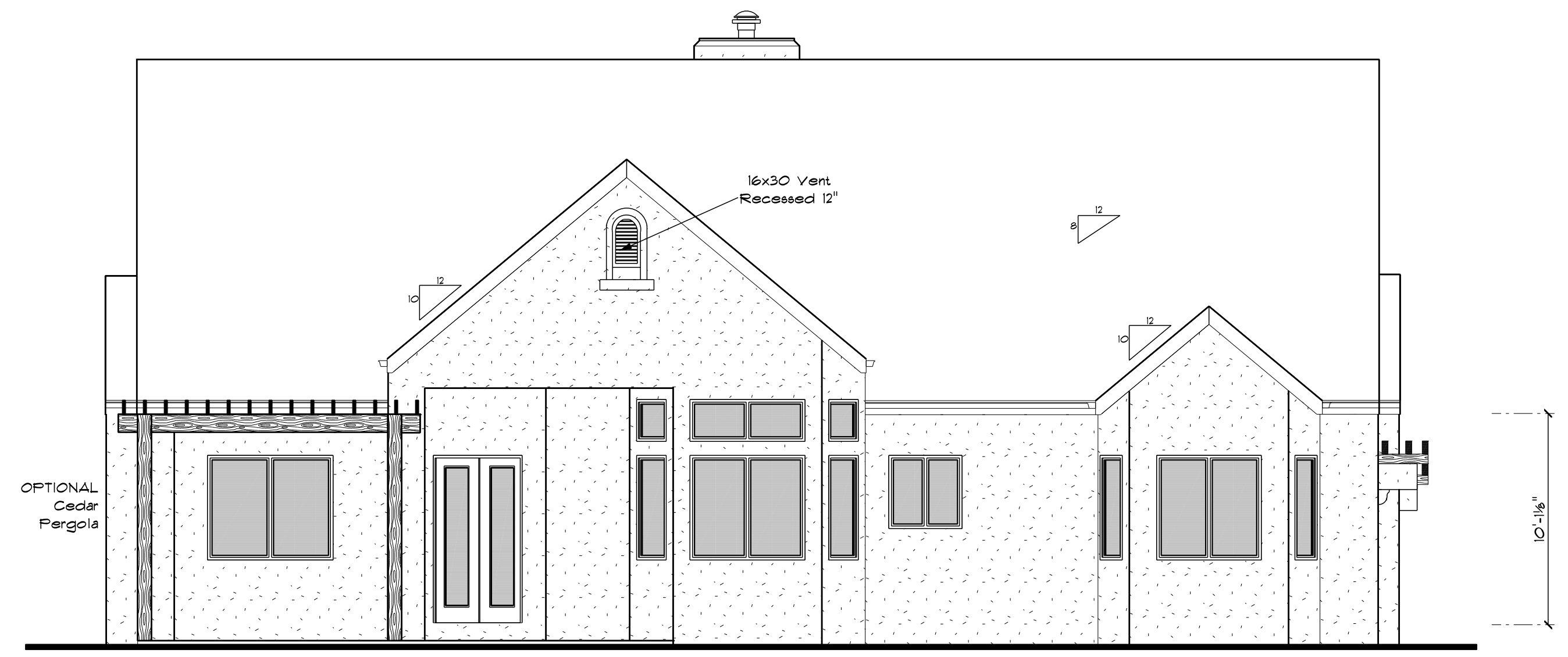
**FRONT ELEVATION- A**  
Scale 3/16"=1'-0"



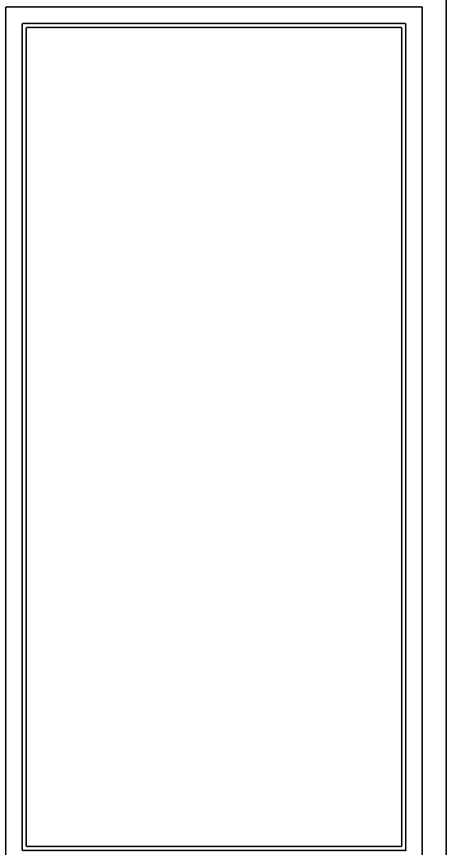
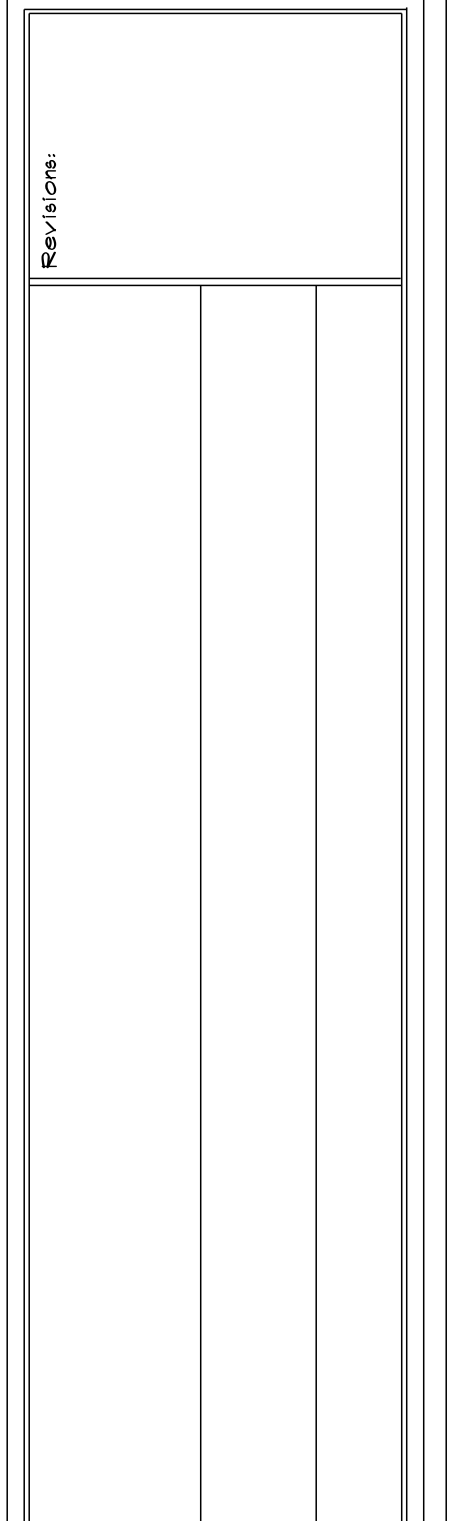
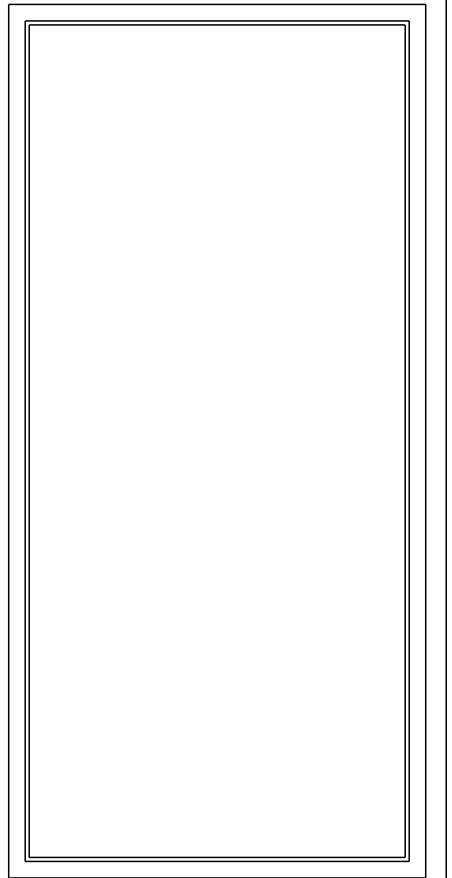
**FRONT ELEVATION- B**  
Scale 3/16"=1'-0"



**SECTION A**  
Scale 3/16"=1'-0"



**BACK ELEVATION**  
Scale 3/16"=1'-0"



Revisions: