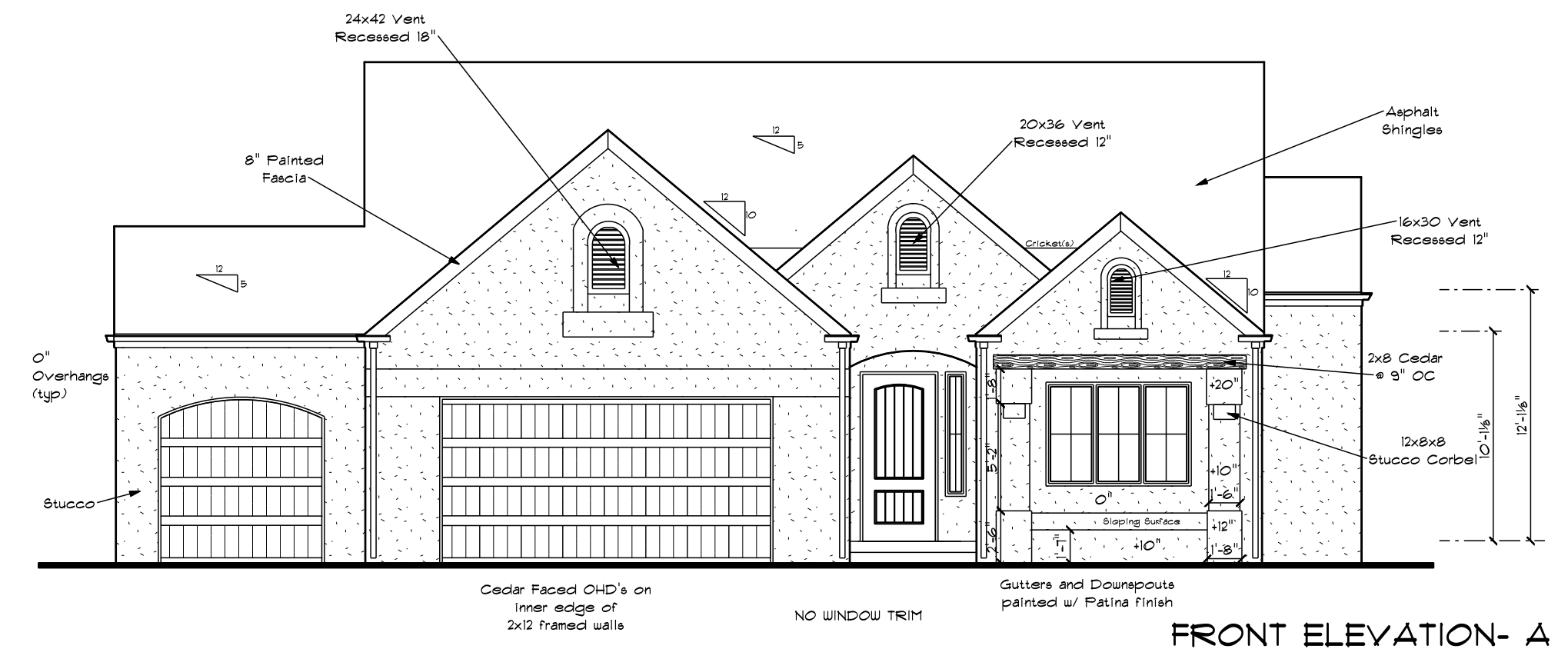
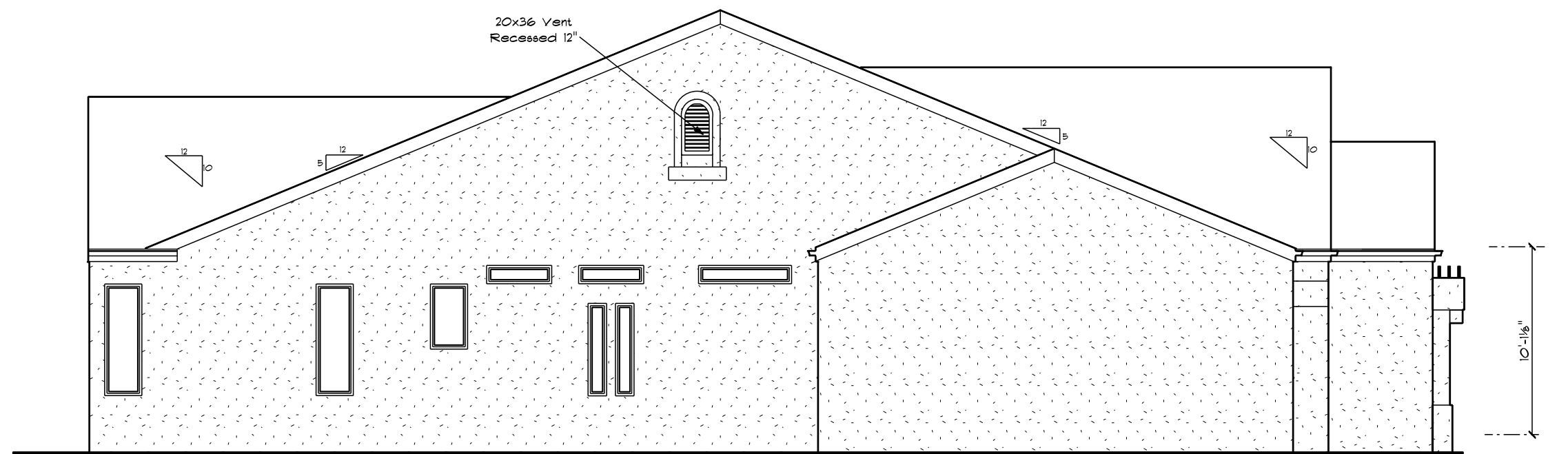




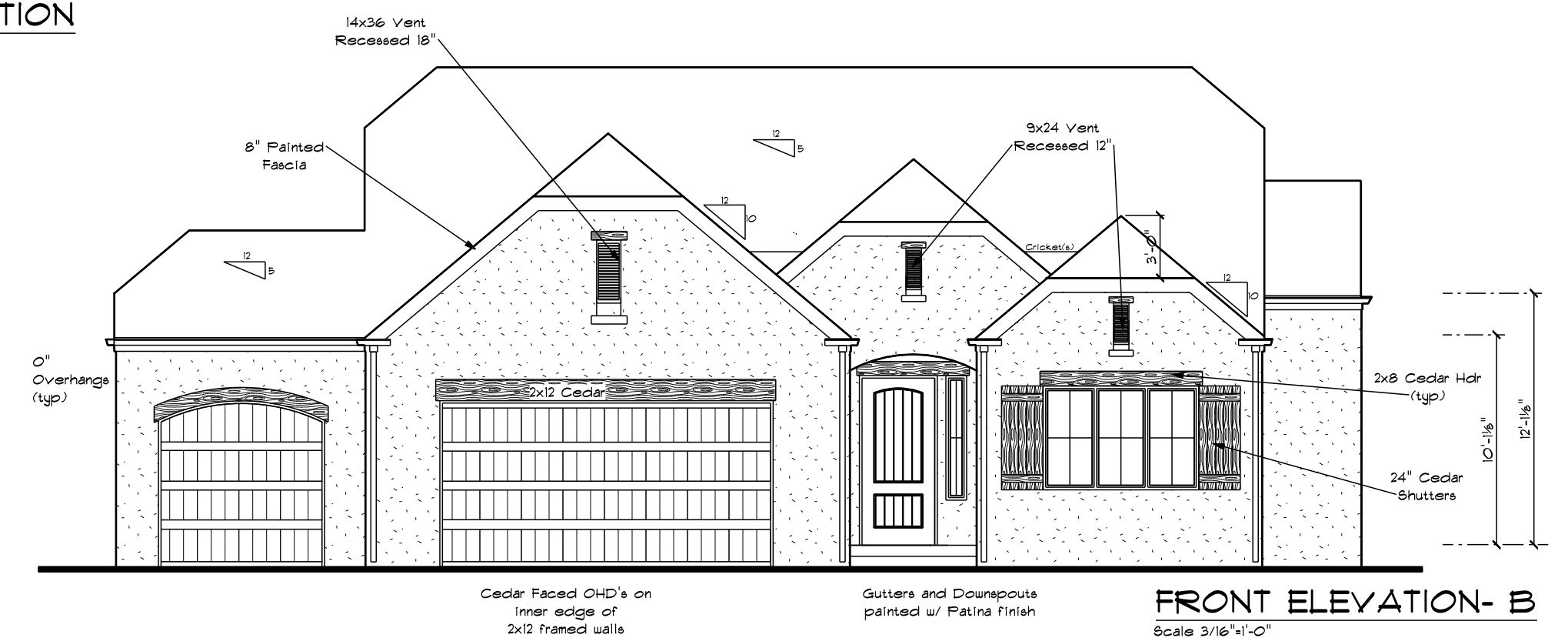
RIGHT ELEVATION
Scale 3/16"=1'-0"



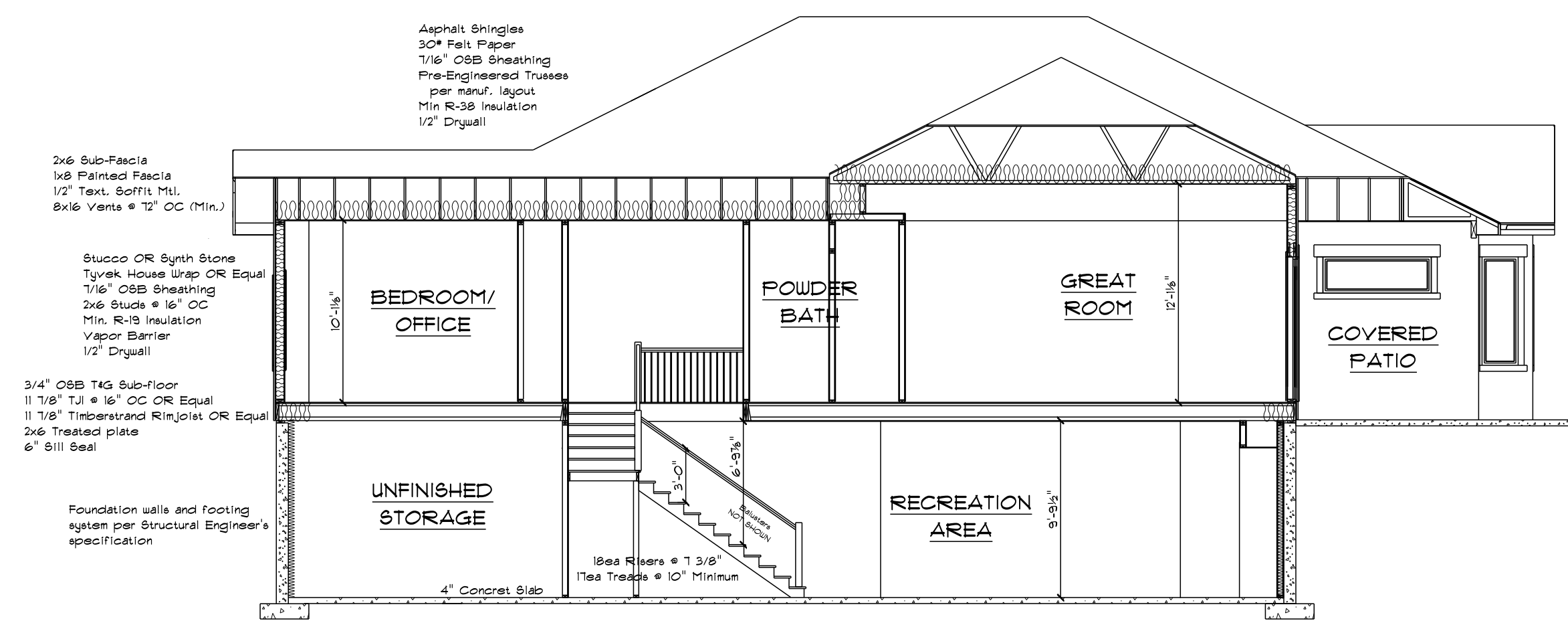
FRONT ELEVATION- A
Scale 3/16"=1'-0"



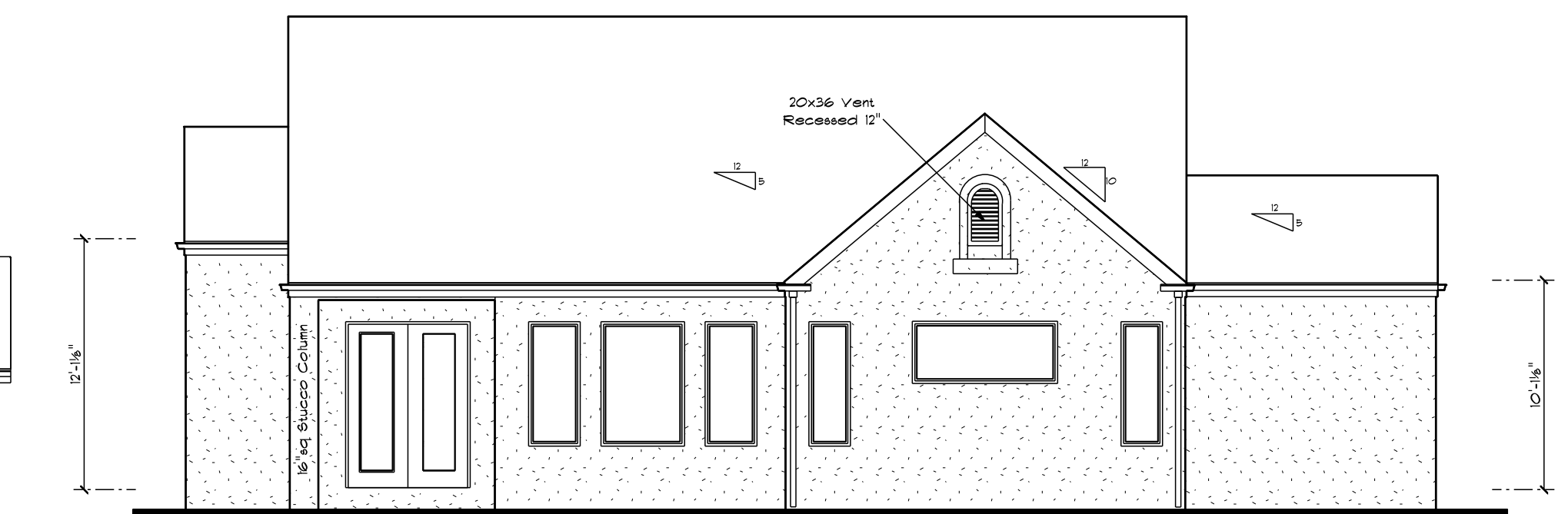
LEFT ELEVATION
Scale 3/16"=1'-0"



FRONT ELEVATION- B
Scale 3/16"=1'-0"



SECTION A
Scale 3/16"=1'-0"



BACK ELEVATION
Scale 3/16"=1'-0"

